

E-BROCHURE

A Heavenly Retreat

Inspired by the local people, architecture and heritage



AlmaLusa Comporta

Just **1.5 hours from Lisbon**, in the heart of Comporta and a 15-minute walk from the beach, AlmaLusa Comporta combines local heritage with modern comfort. **With 53 rooms, 31 of which are suites**, the hotel offers a unique setting surrounded by stunning beaches, the Rio Sado, and rice fields.

The **24/7 Concierge service** is available to help you explore this unique destination in the Alentejo, ideal for recharging your batteries. Car hire is recommended due to limited public transport options. The Reception can arrange transport services, car hire, and taxis.

The hotel offers **parking** with the option of electric vehicle charging, and there are also free public parking options nearby.

Among the various services, highlights include **The RoofTop Bar**, which boasts breathtaking panoramic views, and the **Library Bar**, renowned for its regional dishes and exceptional cocktails. Just a few steps from the hotel, local shops, cafés, and restaurants further enrich the experience.







Sustainability

We aim to tell the story of each region, respecting the local communities and helping to protect their heritage.

At AlmaLusa Hotels, we combine sustainability with **social responsibility**. AlmaLusa Comporta stands out for the rehabilitation of the existing structure, using local materials and regional elements in its design.

In addition to **water and electricity-saving devices and waste management**, we prioritise engagement with local stakeholders.

We promote stays without the need for a private vehicle, offering airport transfers (for a fee) and bike rentals.

Our restaurants focus on **local and seasonal ingredients**, while **local art** celebrates the beauty of Comporta in the hotel's public spaces.





The design of each room was inspired by the distinctive style of Comporta – a remote and unexplored coastal environment.

- King or Twin beds with **Colmol Spa Premium Mattresses**, 100% luxury percale cotton sheets and an 8cm mattress topper, anti-allergy duvets and pillows
- **Power shower**
- 1800W semi-professional **hairdryer**
- **LG Smart TV**
- In-room electronic **laptop safe**
- LG **Air conditioning**
- **Wi-Fi**
- Portuguese **bathroom amenities**
- **Minibar** (empty)
- Nespresso **coffee machine** with daily replenishment

All of our **Suites** include a kitchen with a dishwasher, ceramic hob, fridge, kettle, and the necessary kitchen utensils for a comfortable stay.



Comfort & Care

Services included in all rooms and suites:

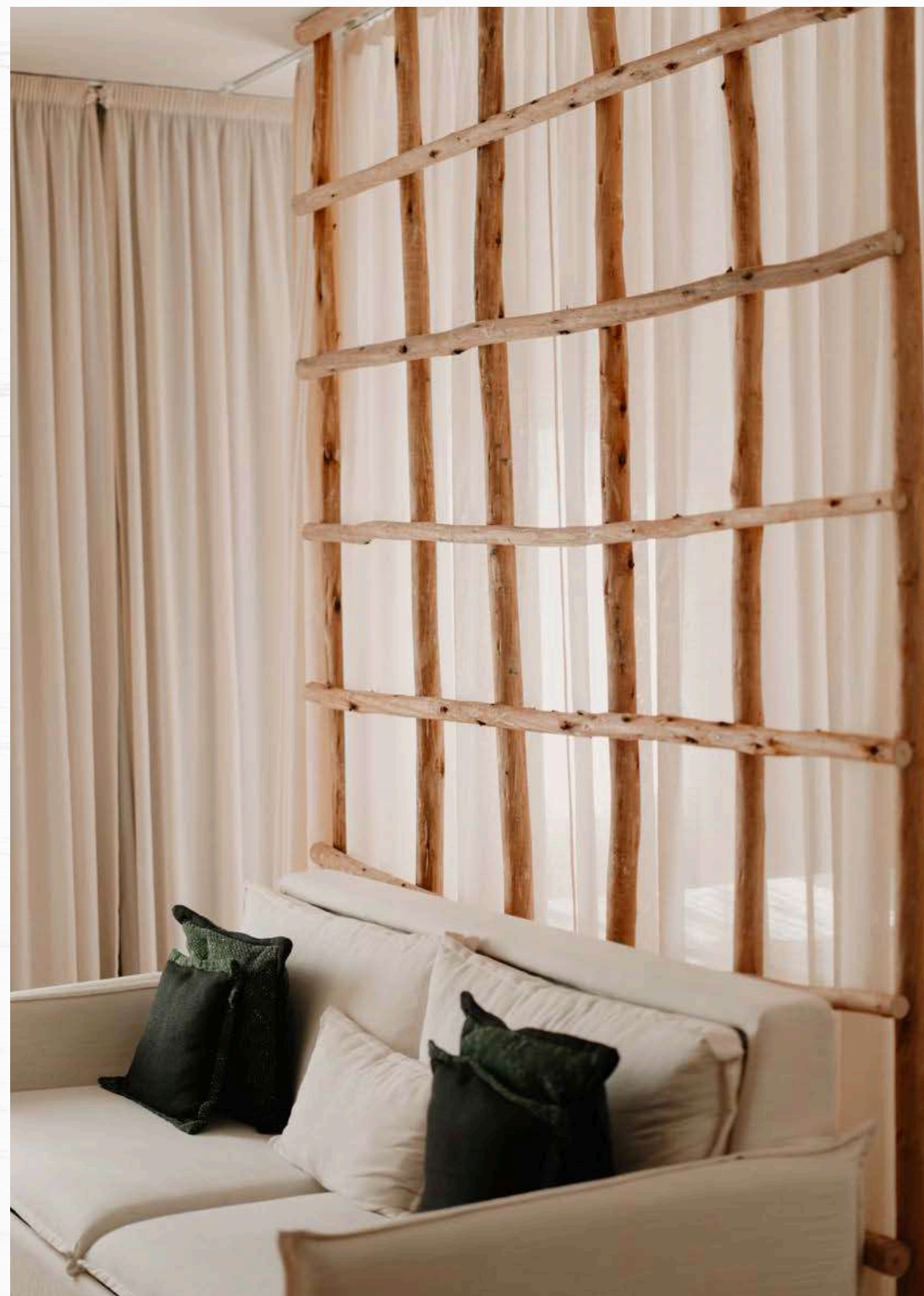
- 2 bottles of water per day (still and sparkling)
- Daily housekeeping service
- Satellite and fibre TV channels
- **iPhone** with national calls, unlimited internet, and access to our app

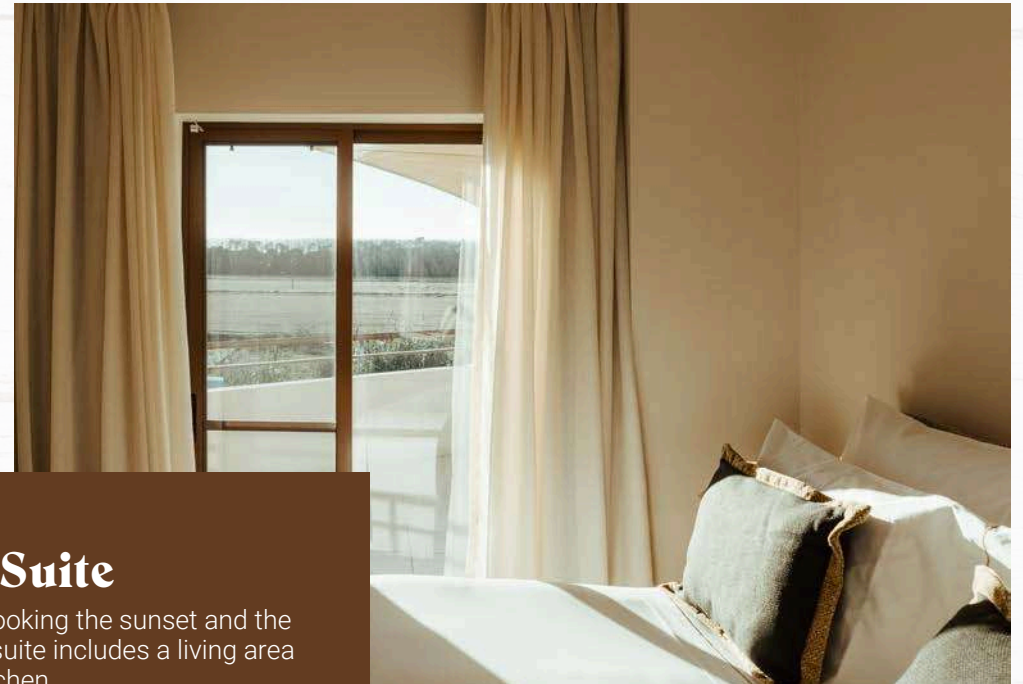
Available on request:

- AlmaLusa Concierge 24/7
- Pillow menu
- Iron and ironing board
- Accessible room for guests with reduced mobility
- Cot

Available on request and subject to additional charges:

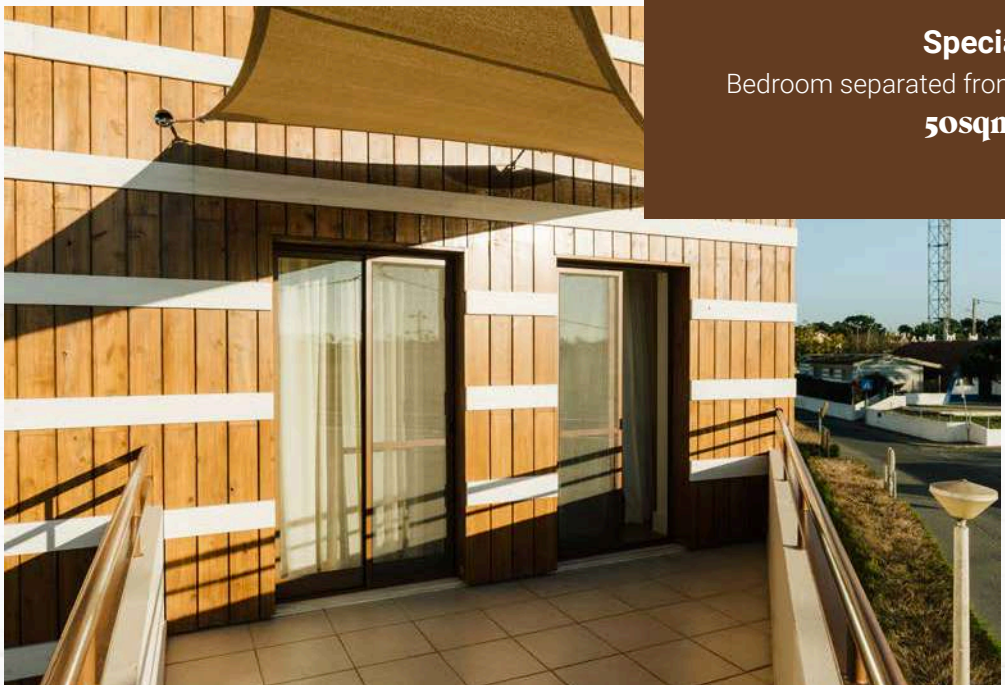
- Laundry and dry cleaning services
- Babysitting service
- Sofa bed (available only in Suites)





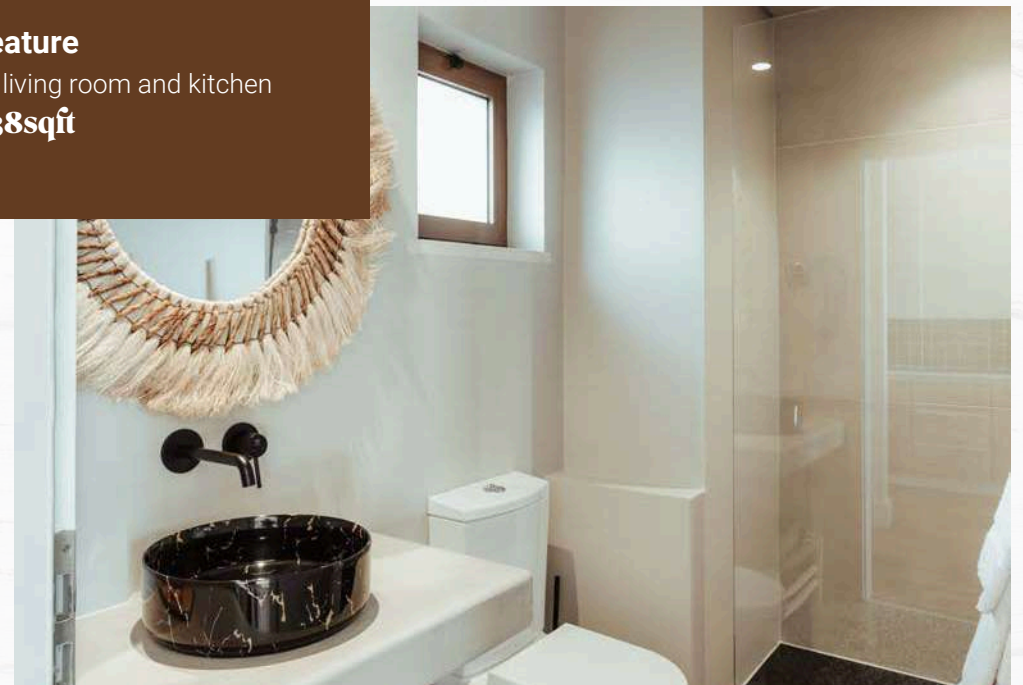
Deluxe Suite

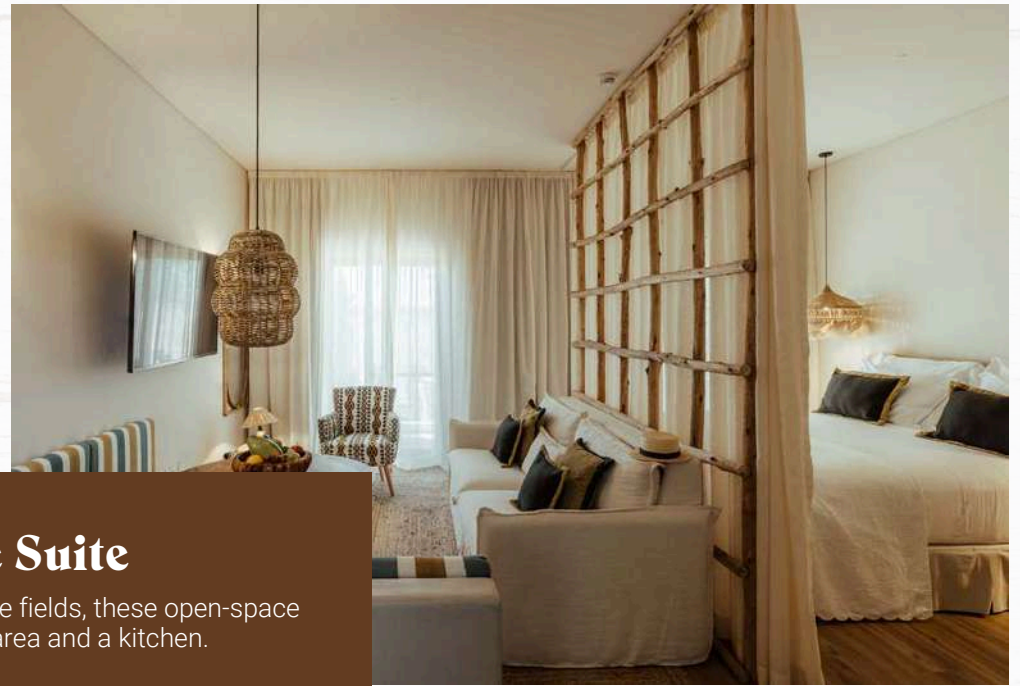
The largest in the hotel, overlooking the sunset and the rice fields, this one-bedroom suite includes a living area and a kitchen.



Special Feature

Bedroom separated from the living room and kitchen
50sqm - 538sqft





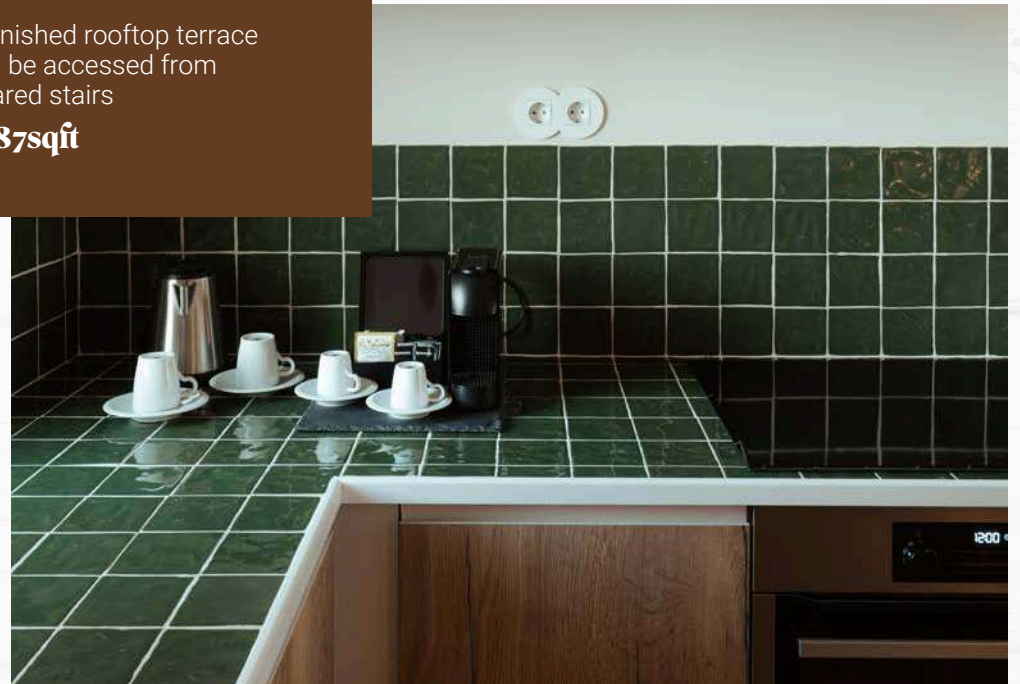
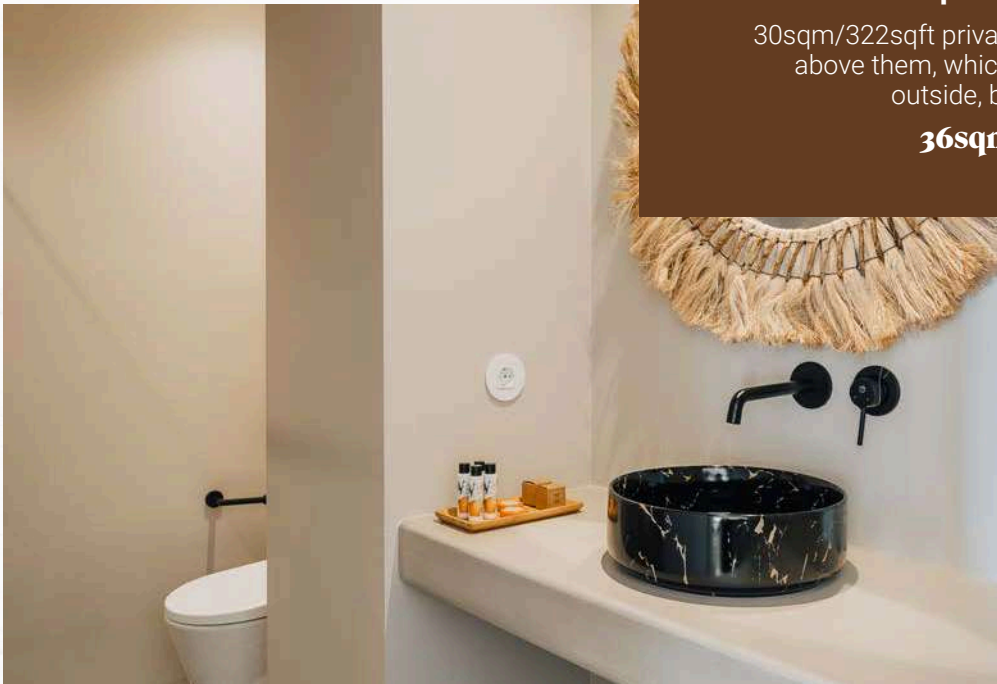
Terrace Suite

Overlooking the pool or the rice fields, these open-space suites include a living area and a kitchen.

Special Feature

30sqm/322sqft private furnished rooftop terrace above them, which can be accessed from outside, by shared stairs

36sqm - 387sqft





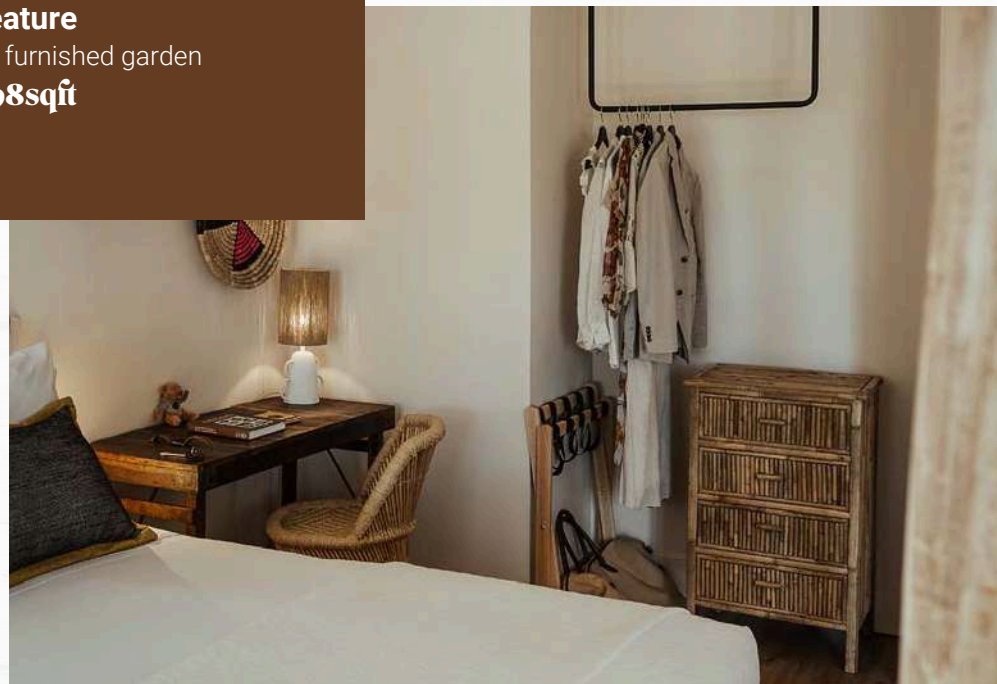
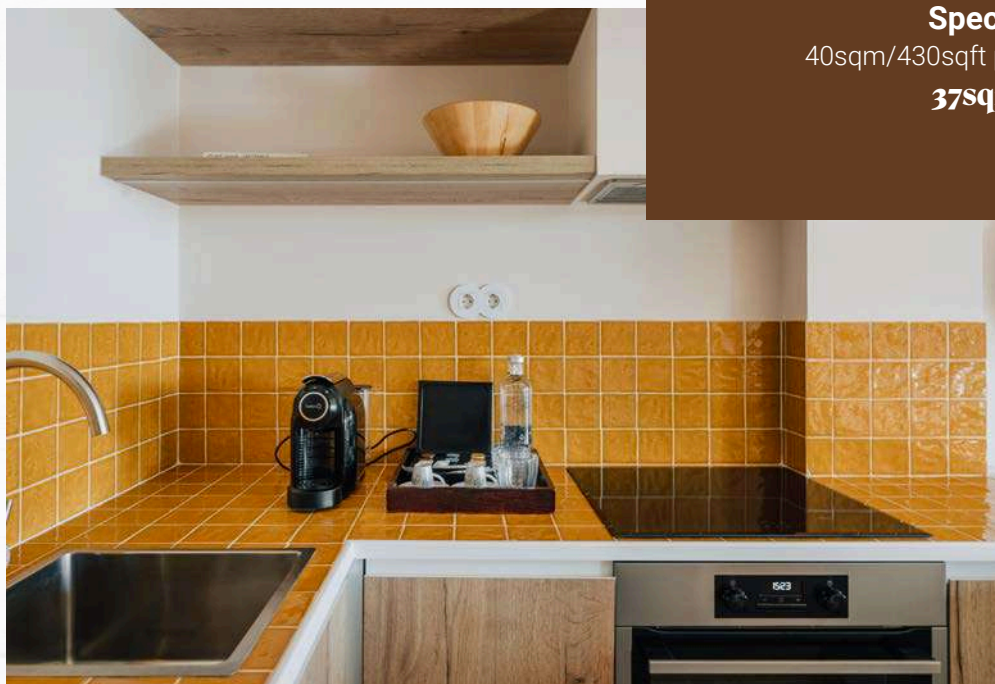
Garden Suite

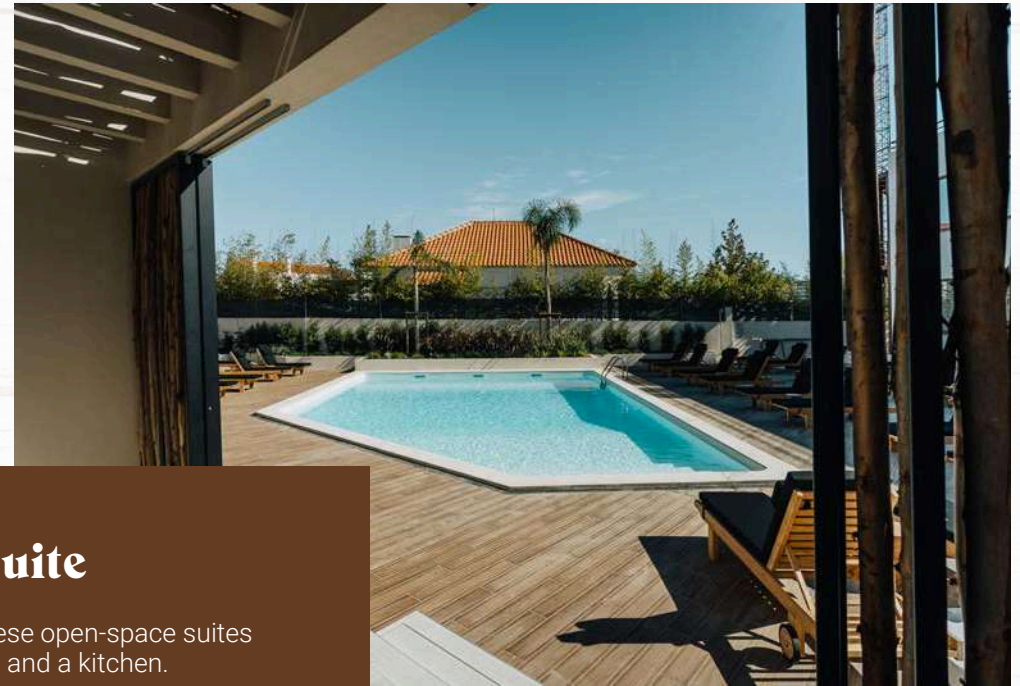
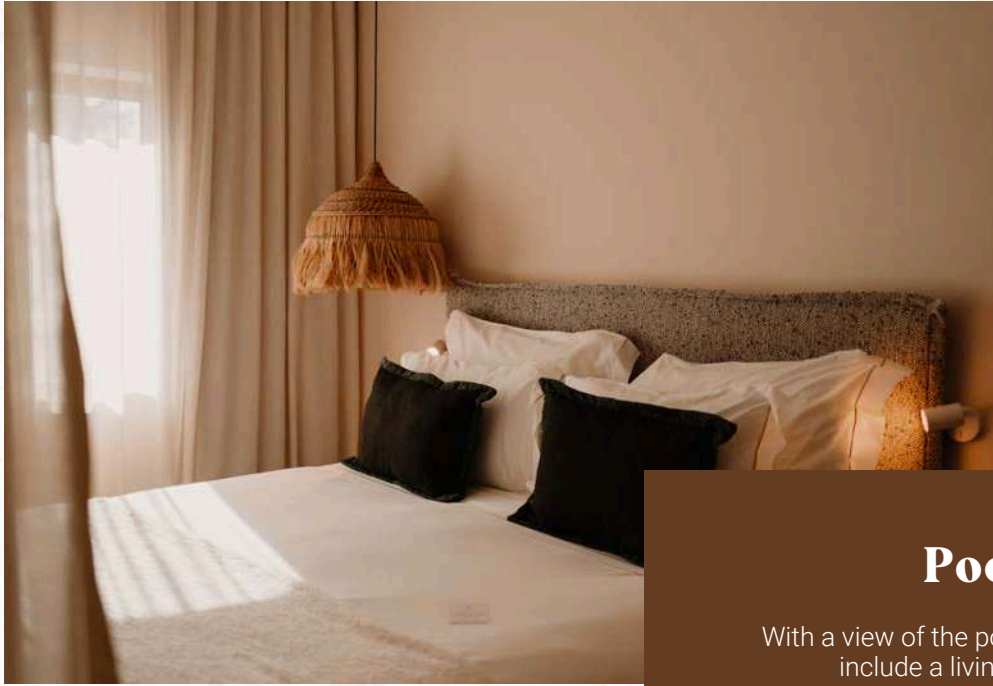
Overlooking the garden, these open-space suites include a living area and a kitchen.

Special Feature

40sqm/430sqft private furnished garden

37sqm - 398sqft





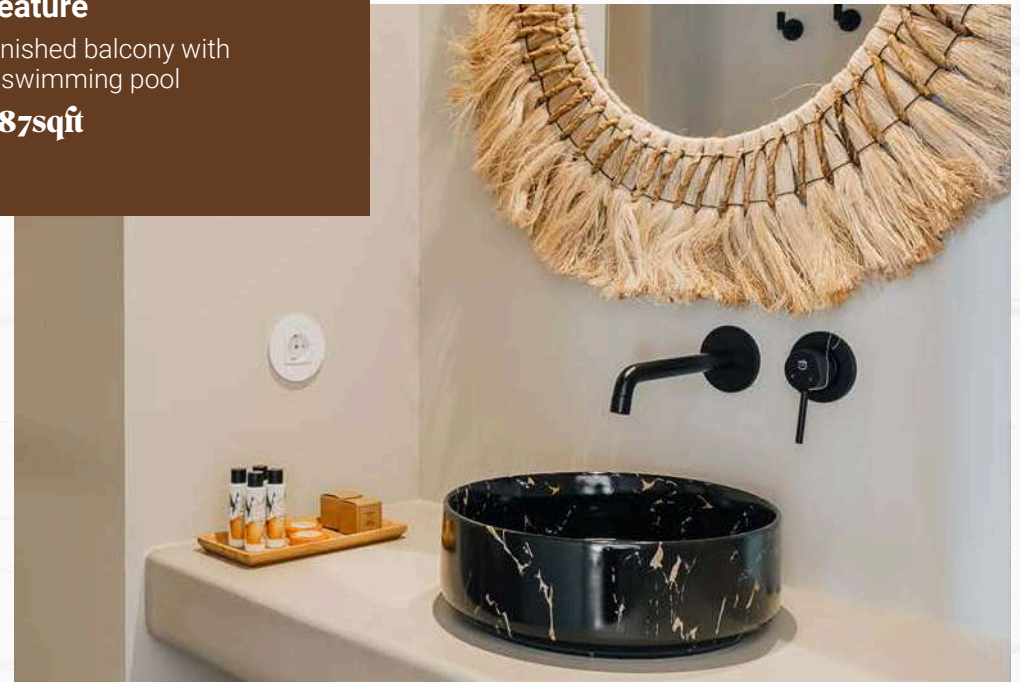
Pool Suite

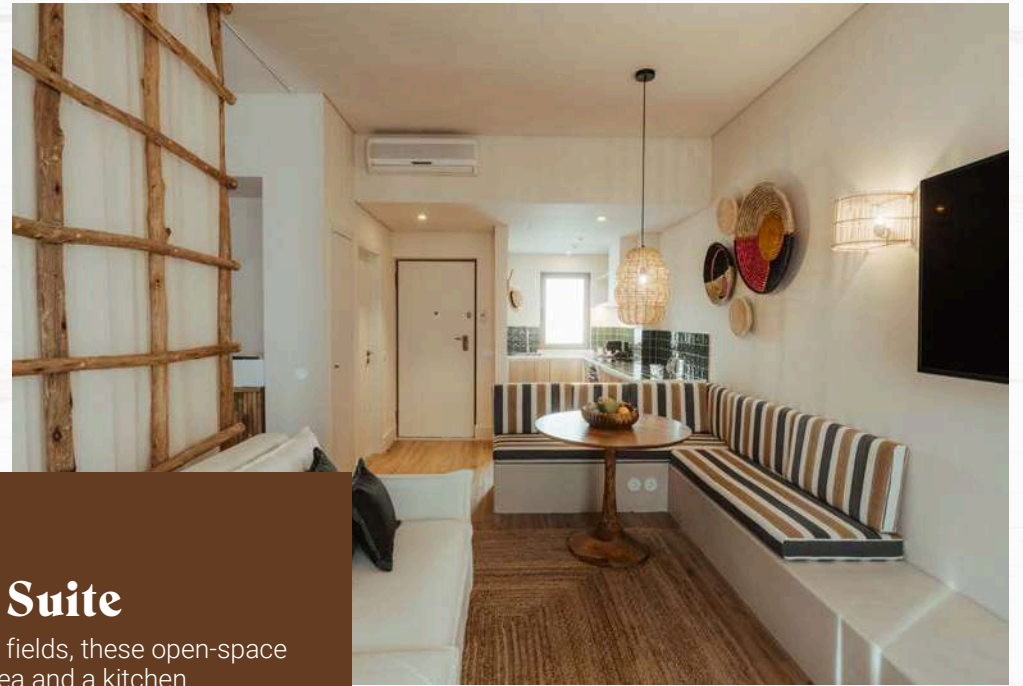
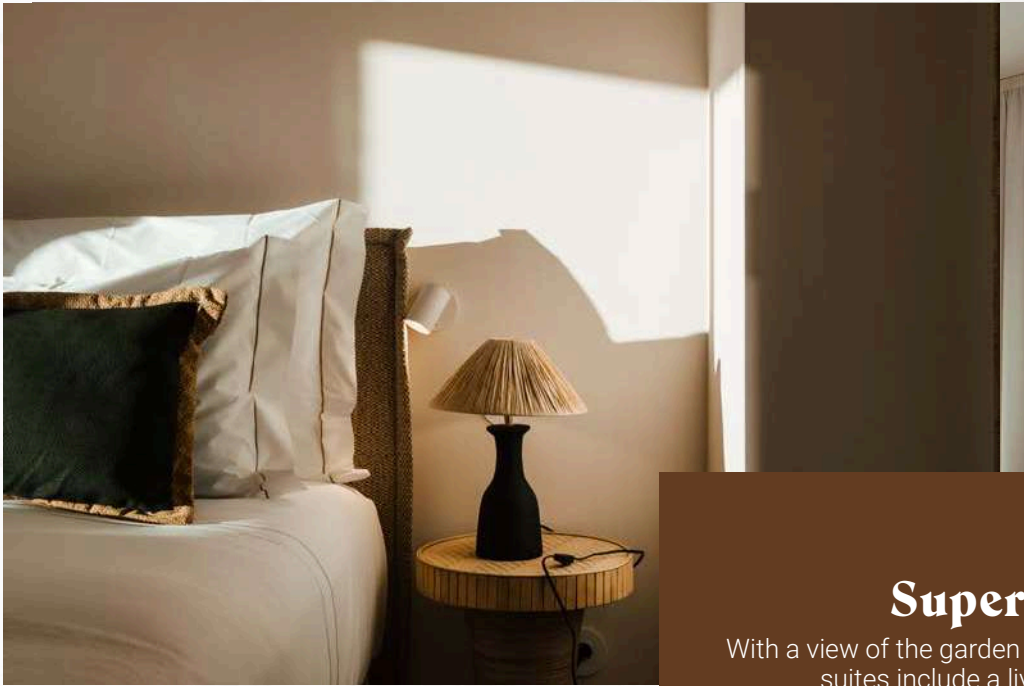
With a view of the pool, these open-space suites include a living area and a kitchen.

Special Feature

8sqm/86sqft private furnished balcony with direct access to the swimming pool

36sqm - 387sqft





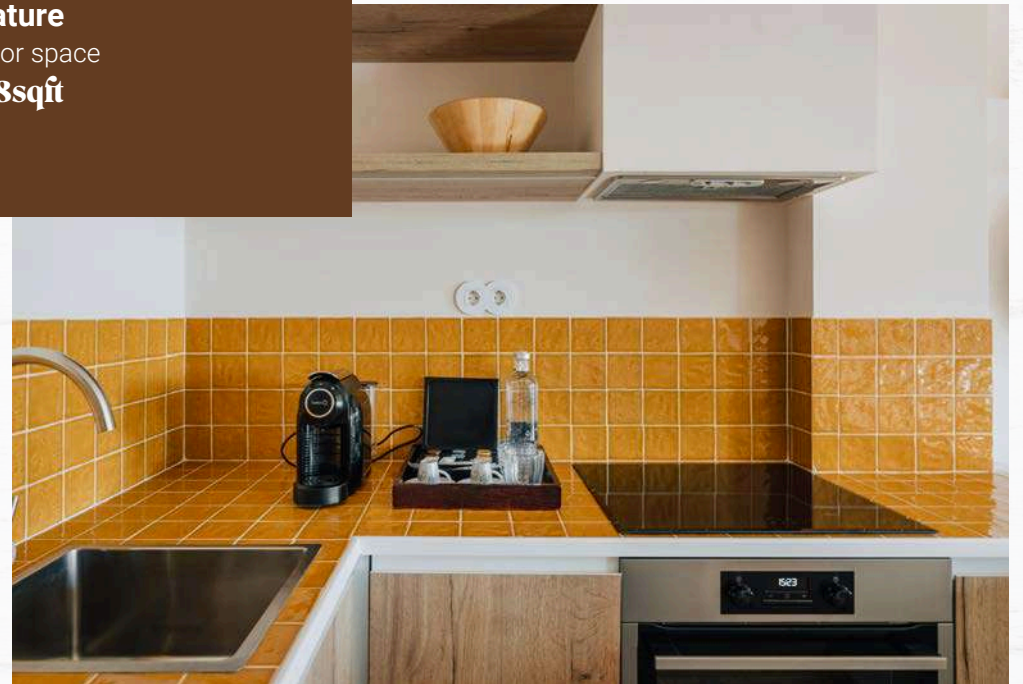
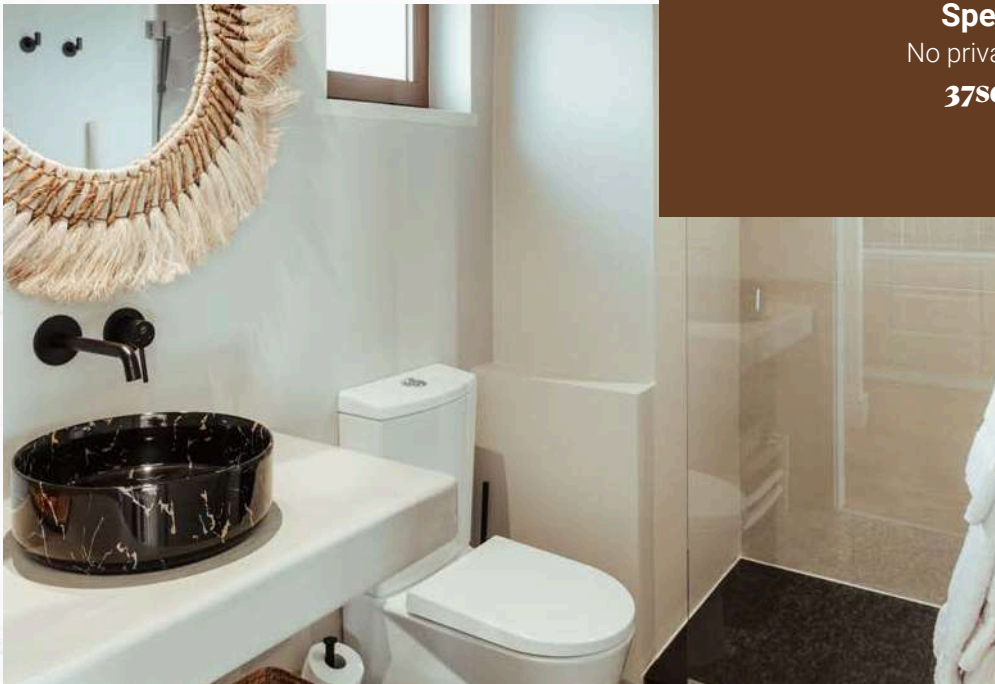
Superior Suite

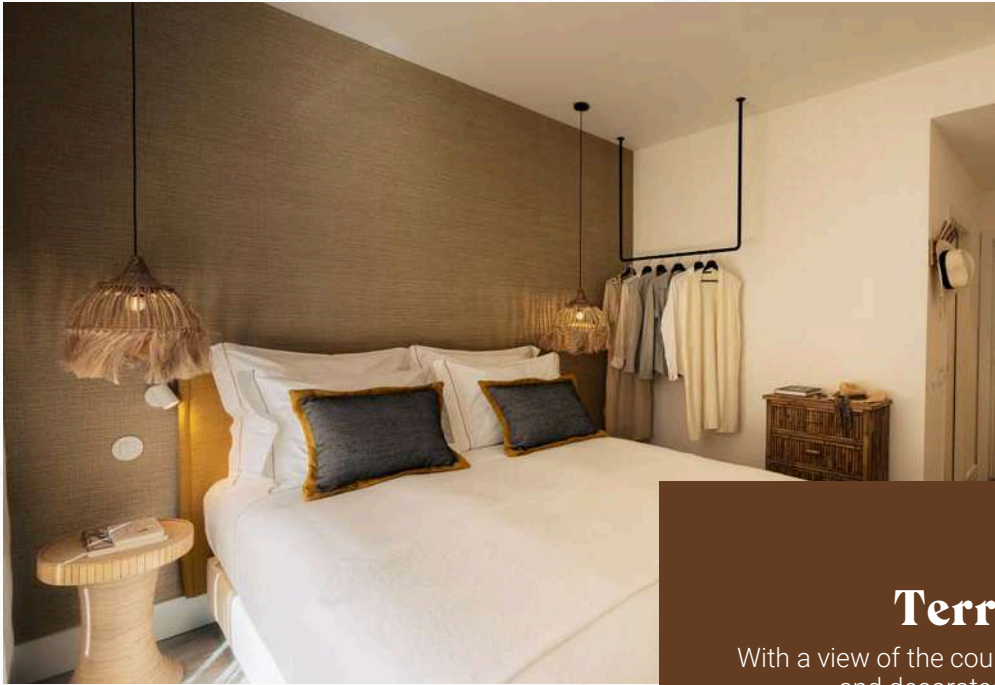
With a view of the garden or rice fields, these open-space suites include a living area and a kitchen.

Special Feature

No private outdoor space

37sqm - 398sqft



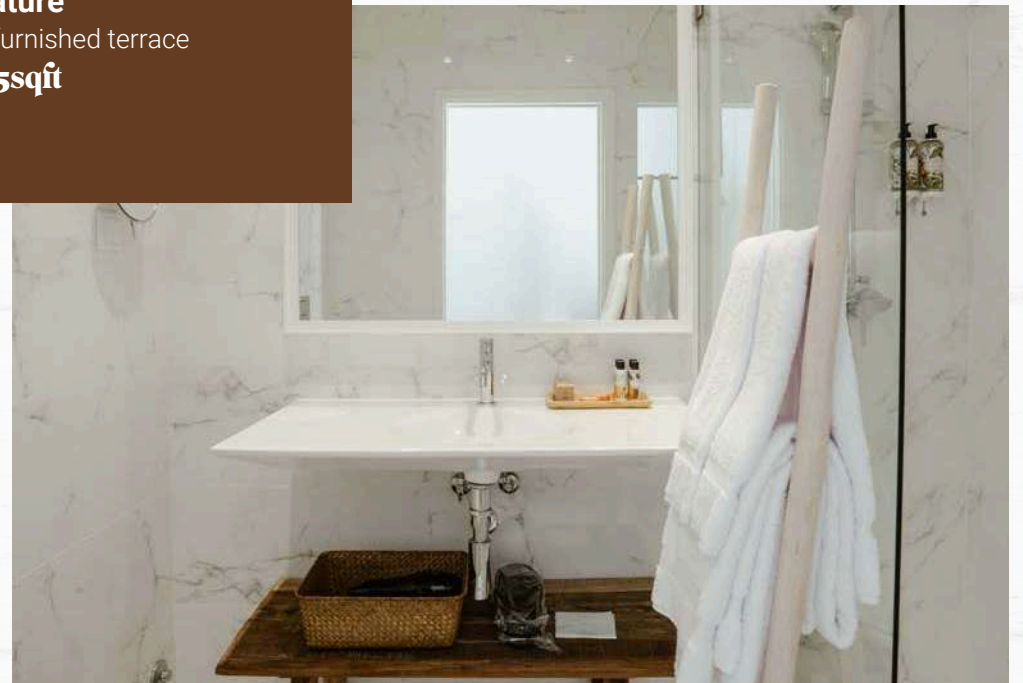
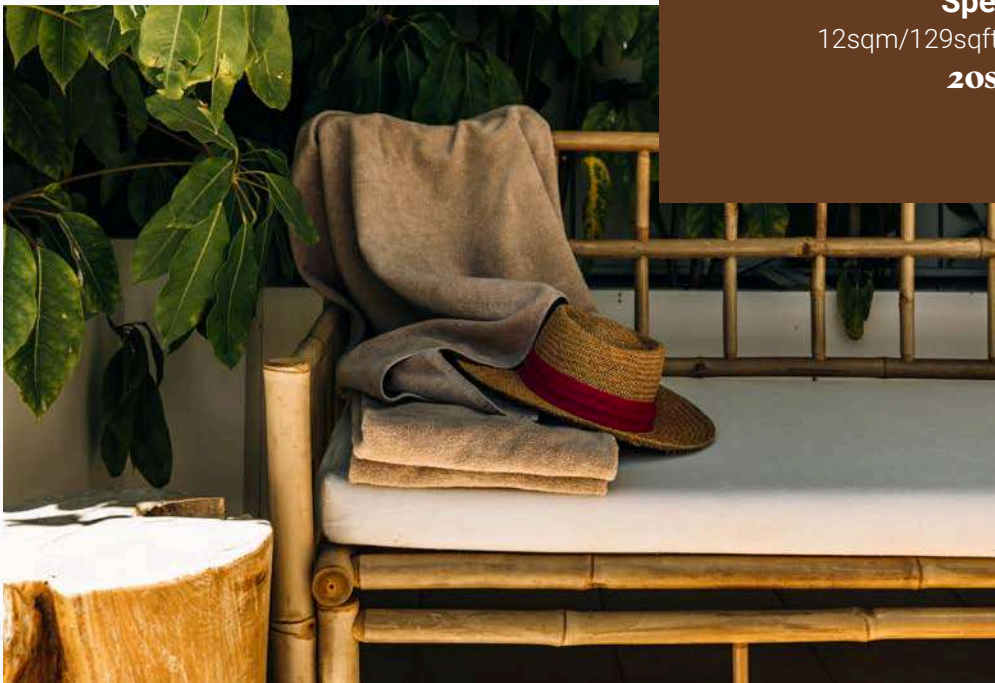


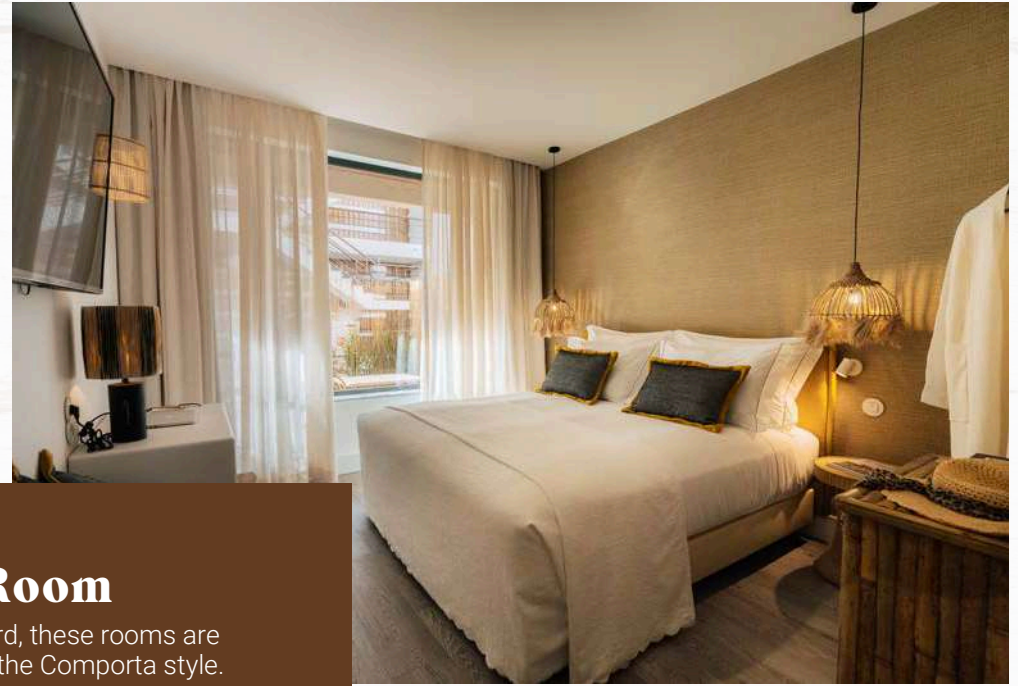
Terrace Room

With a view of the courtyard, these rooms are designed and decorated in the Comporta style.

Special Feature

12sqm/129sqft private furnished terrace
20sqm - 215sqft





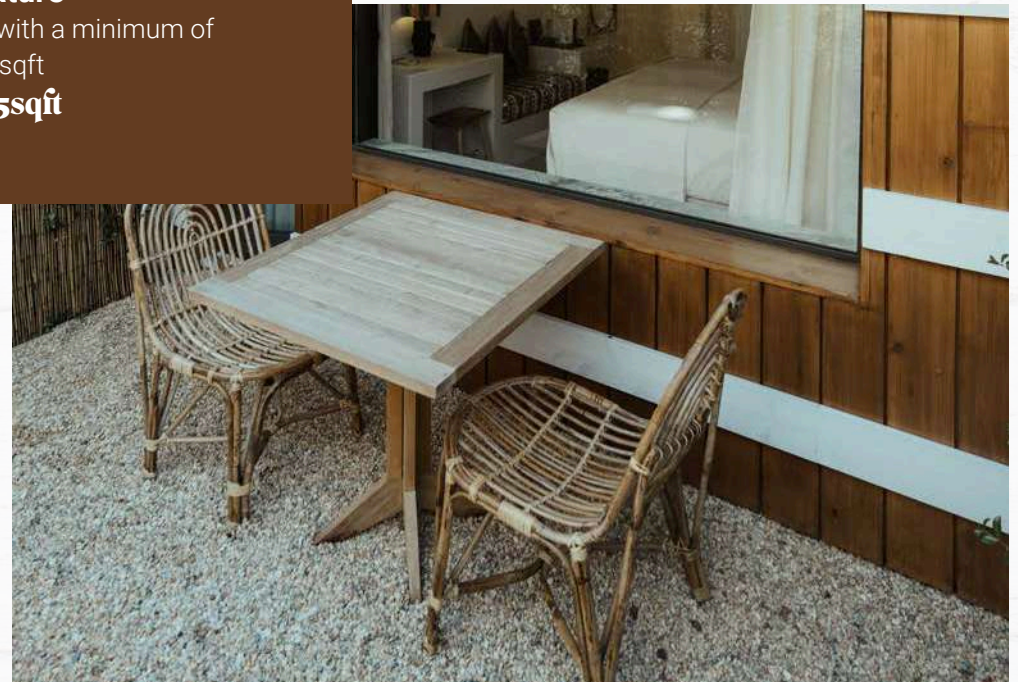
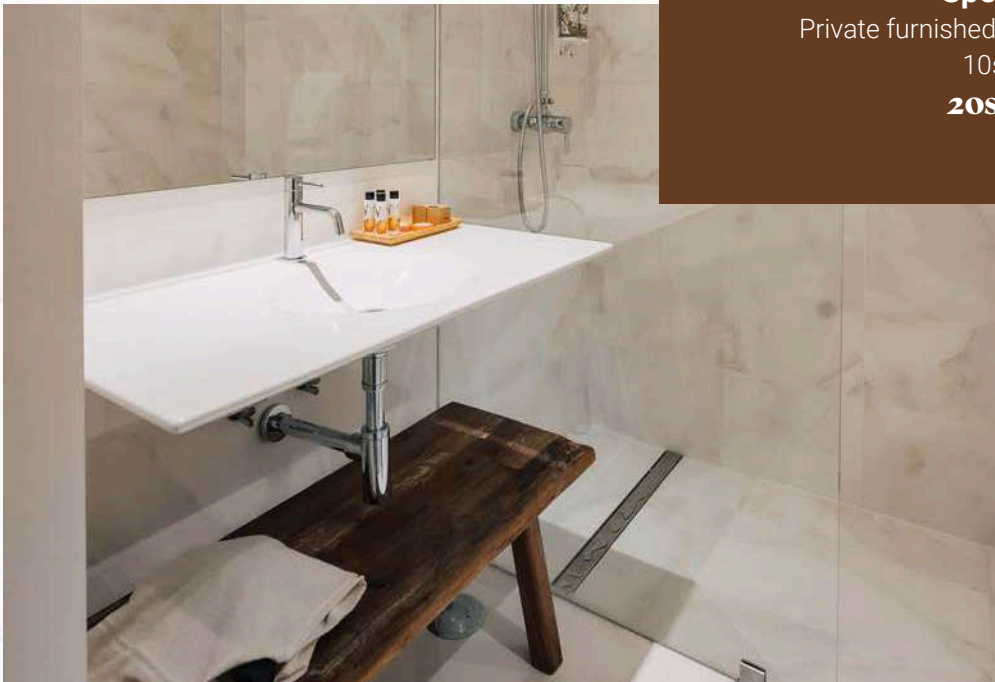
Garden Room

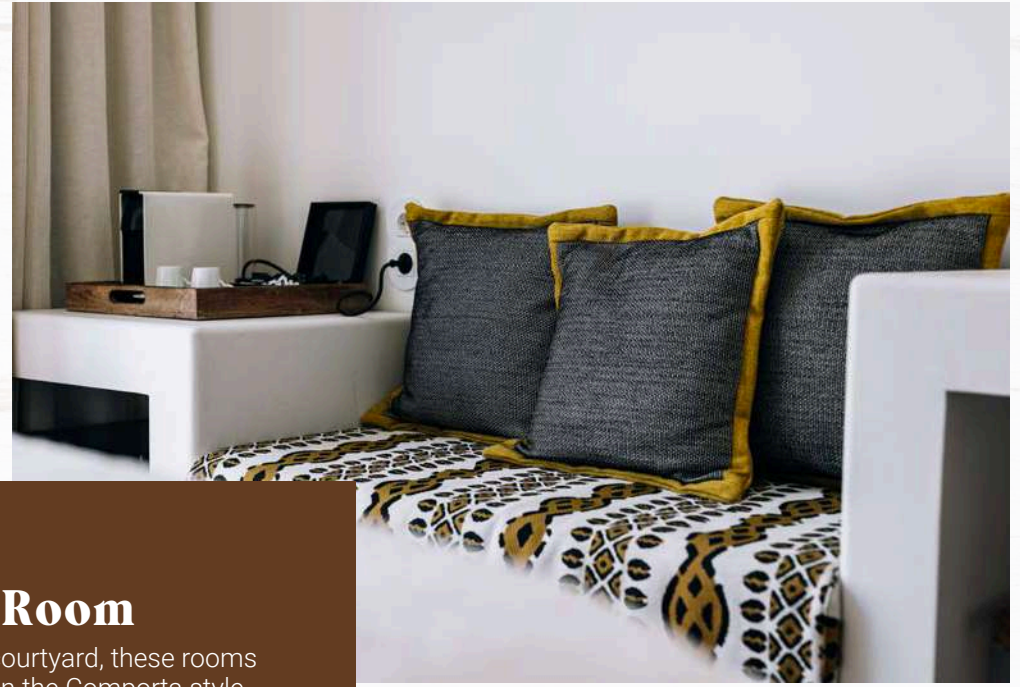
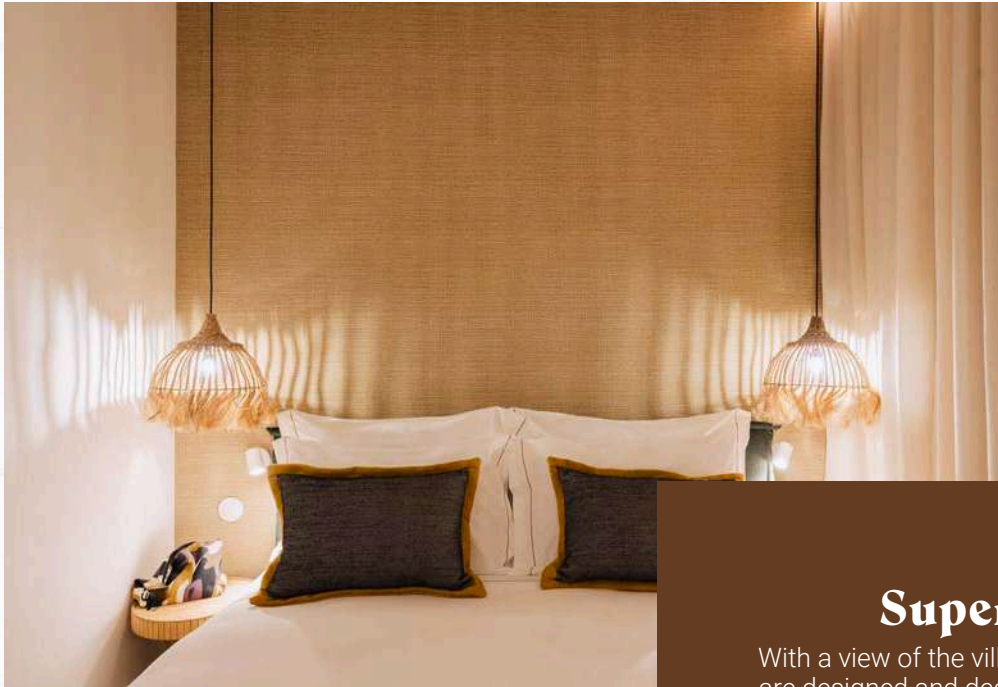
With a view of the courtyard, these rooms are designed and decorated in the Comporta style.

Special Feature

Private furnished garden, with a minimum of
10sqm/107sqft

20sqm - 215sqft



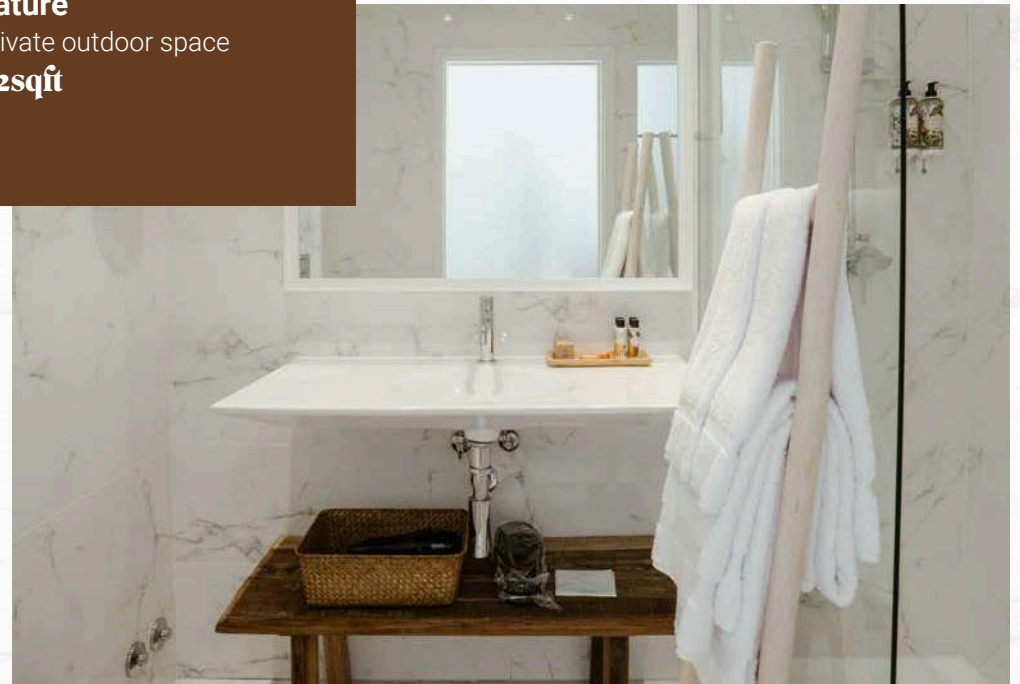
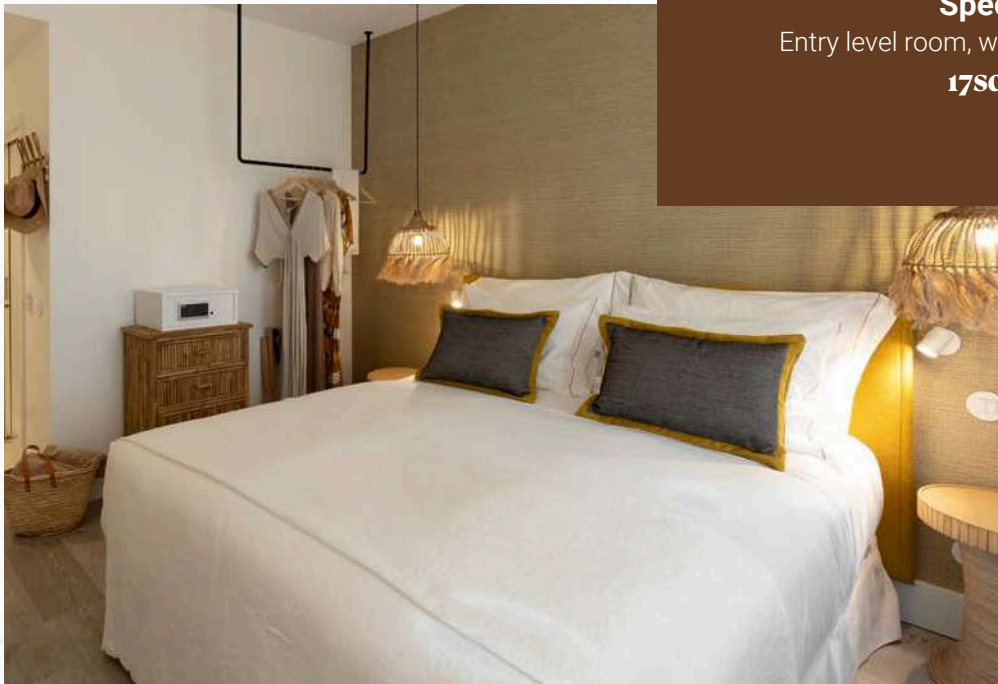


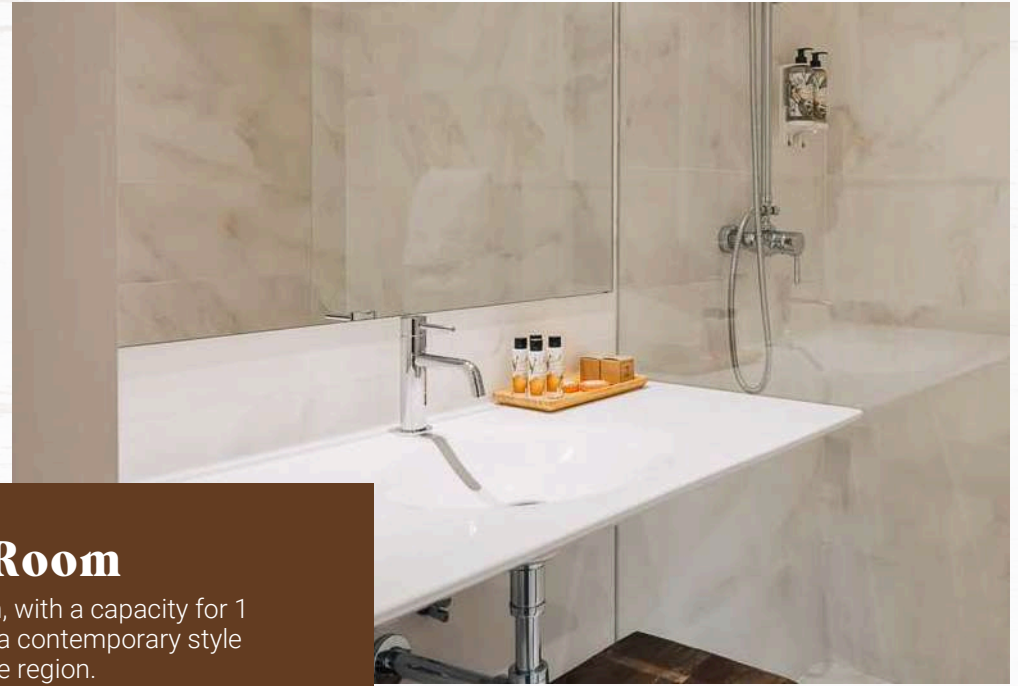
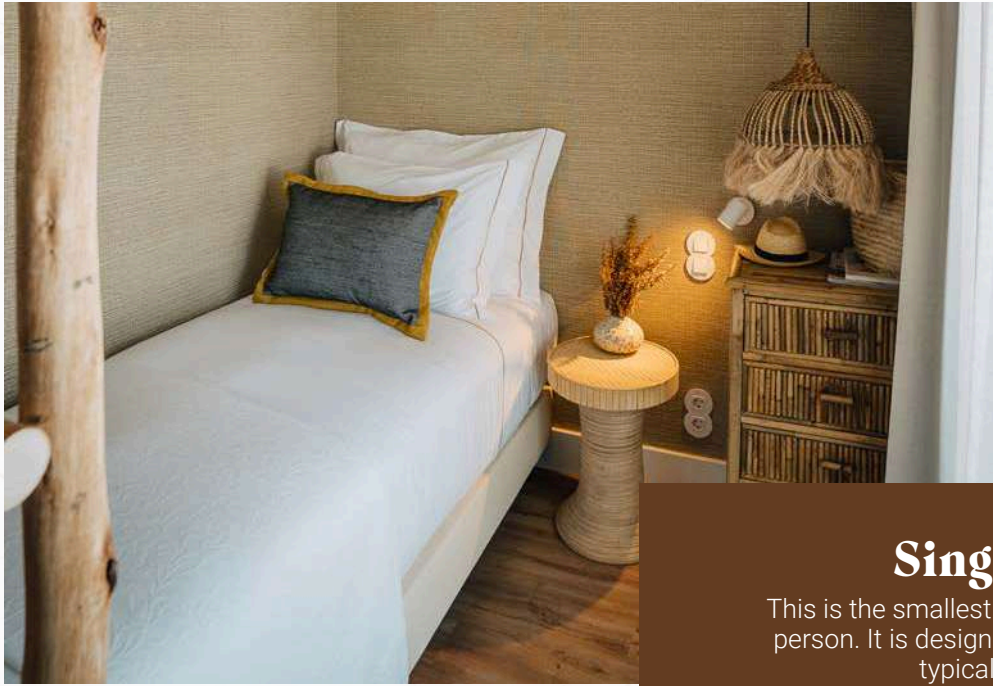
Superior Room

With a view of the village or courtyard, these rooms are designed and decorated in the Comporta style.

Special Feature

Entry level room, with no private outdoor space
17sqm - 182sqft





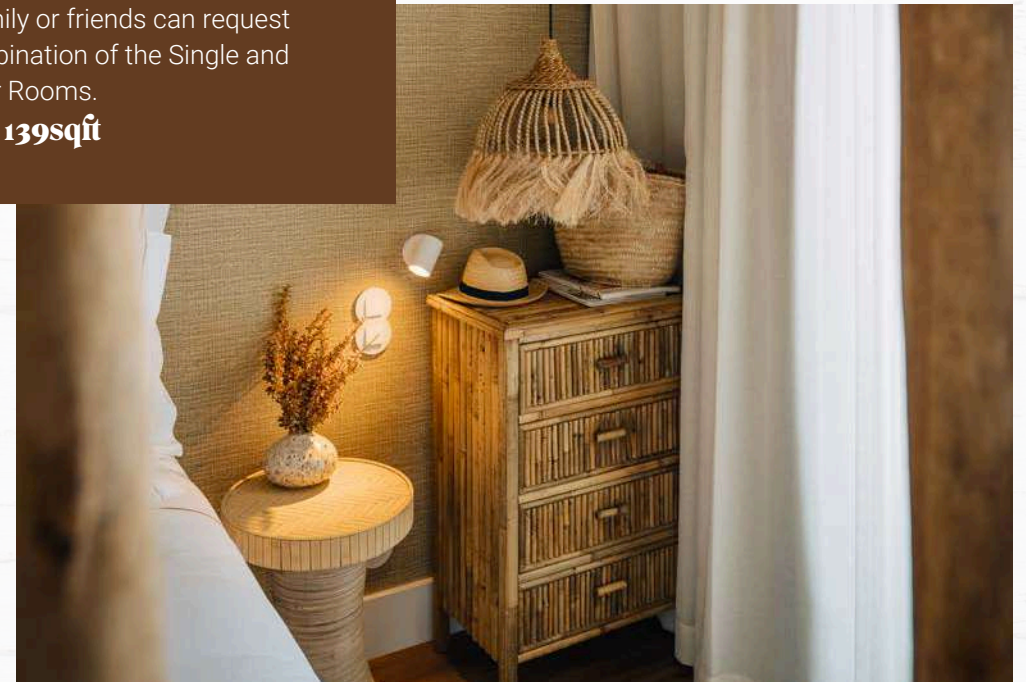
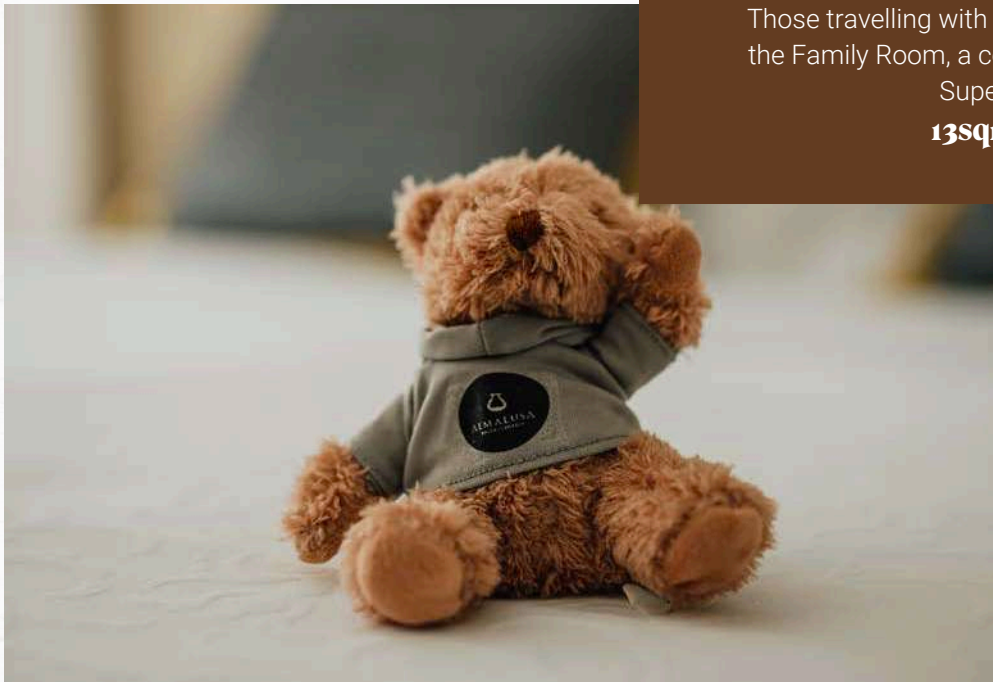
Single Room

This is the smallest room, with a capacity for 1 person. It is designed in a contemporary style typical of the region.

Special Feature

Those travelling with family or friends can request the Family Room, a combination of the Single and Superior Rooms.

13sqm - 139sqft





AlmaLusa Café

Discover delicious and healthy food options with refreshing drinks made from natural ingredients. You can sit on the terrace or opt for the Grab&Go service to enjoy your meal on the beach or at a fun picnic.



The Rooftop Bar

After a day at the beach in a paradise-like setting, there's nothing better than unwinding at The Rooftop Bar, enjoying a delicious cocktail accompanied by tapas and snacks, all while taking in the unparalleled view of the rice fields and sunset.





Duna

Each day, enjoy a breakfast buffet at Duna, with a terrace and views of the pool. Artisan bread, viennoiseries, hot dishes, fruit, juices, yoghurts, cereals, and lactose- and gluten-free options, along with plant-based drinks for dietary intolerances, are all part of the perfect start to your day.



Library Bar

This is the perfect retreat: cosy and intimate, with a relaxed atmosphere to enjoy a drink or experience a unique culinary journey. With a menu thoughtfully crafted by our chef, you will find it hard to resist his suggestions, available during Autumn and Winter.





Grab&Go

Throughout the day, guests can make use of the Grab&Go service by simply heading to the AlmaLusa Café, where their order will be freshly prepared and handed over on the spot.

Duna by the Pool

Duna by the Pool offers a relaxing experience by the poolside, with a light and delicious menu featuring fresh salads, hot dishes, cocktails, and desserts. Perfect for enjoying while you unwind or take a refreshing dip.





In a destination made for relaxation and restoration, AlmaLusa Comporta brought together a range of services for mind, body, and wellness. You can find more information [here](#).

Spa Suite by Elemental Herbology

Guests can indulge in a variety of massages and personalised treatments in the Spa Suite. The menu, in partnership with Elemental Herbology, combines the art of relaxation with the power of nature for the ultimate wellness experience, using natural ingredients and products.

Wellness on the terrace

Designed to offer a holistic fitness experience with a natural, organic approach to exercise, this outdoor space is free from traditional machines. It features equipment for functional movements, promoting both physical wellness and a deeper connection with the body.

Classes

We offer both private and group classes, set against the stunning backdrop of the rice fields. Class details, schedules, and pricing are available [here](#).

Outdoor Pool

The outdoor pool offers the perfect opportunity to take a refreshing dip and relax in the serene surroundings.

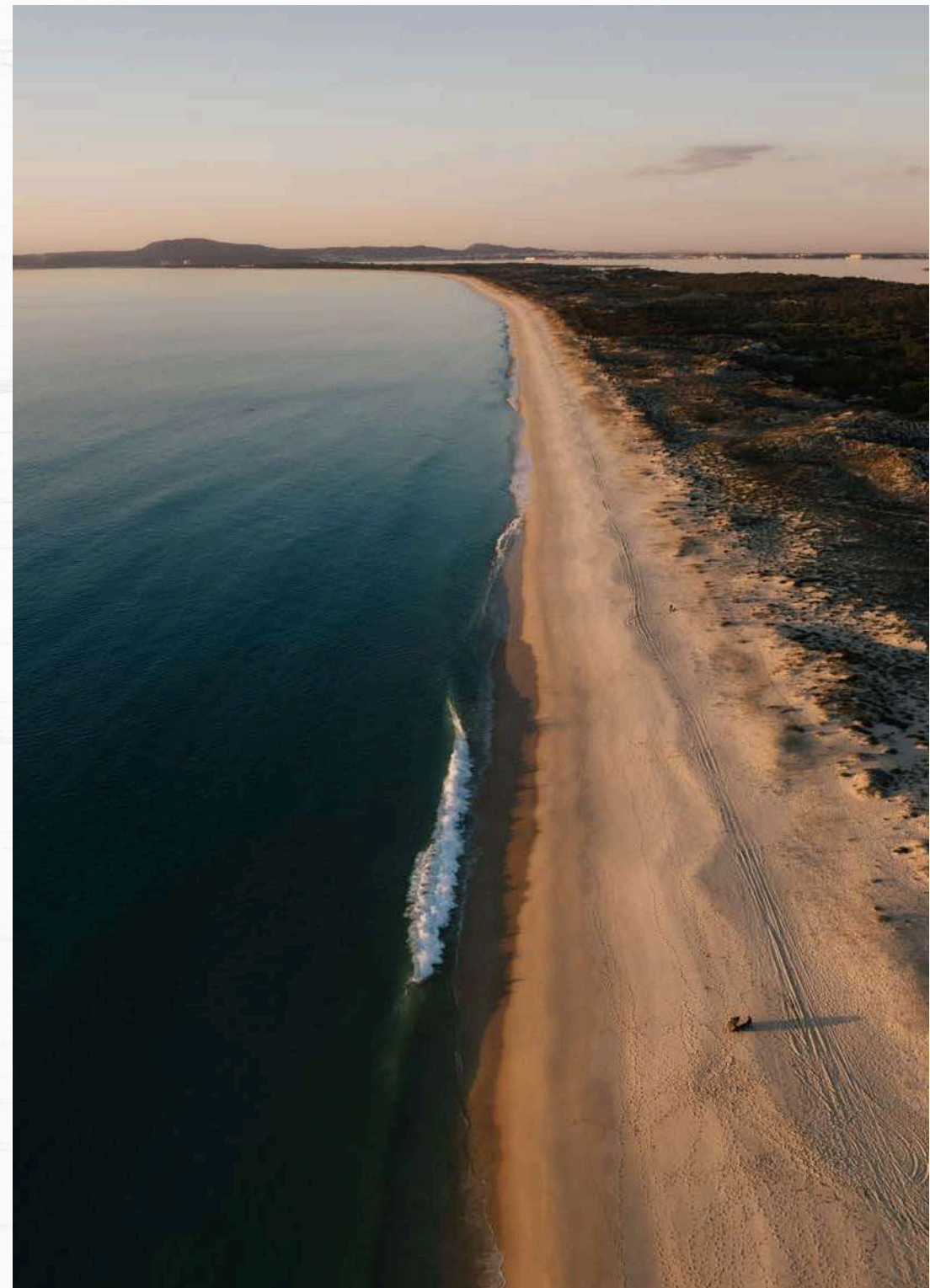


To help our guests fully explore the region, we've curated a selection of **unforgettable activities and experiences**: wine tastings, cycling tours through the rice fields, horseback riding on the beach, and golf lessons.

Our Concierge service is available 24/7. We create **personalised itineraries** based on our guests' preferences, recommending the best restaurants, activities, and sights to explore, while handling all necessary reservations.

AlmaLusa Hotels App

During their stay, guests have access to an iPhone with the "AlmaLusa Hotels" app, available on the **App Store** and **Google Play**. The app features recommendations, activities, restaurants, shops, itineraries, and available services. The Concierge is also available 24/7 via the app's chat feature.





Policies

Check-in 4pm | **Check-out** 11am.

Prices include VAT.

All indoor areas are **non-smoking**, with different policies potentially applied to outdoor areas.

Identification | For security purposes, check-in can only be processed with a valid ID document from each one of the guests.

Guarantee Policy | Reservations must be guaranteed with a valid credit card at the time of the booking. The amount of one night will be pre-authorized 8 days prior to arrival. The payment for the stay shall be made at check-in. Promotional or Pre-Paid Rates will be charged at the time of booking. If the Credit Card Holder is not travelling, a third-party authorisation form must be filled and signed, and a copy of his ID must be presented. The hotel reserves the right to refuse any reservation that does not meet these requirements. For more information, please contact us at info.cp@almalusahotels.com.

Group Reservation | The website booking engine can only be used to make individual reservations, less than five rooms. For bookings of five or more rooms, please contact the hotel. The hotel reserves the right to apply different group cancellation and payment policies.

Cancelamentos | As reservas diretas podem ser canceladas ou modificadas, de acordo com as condições definidas. Para cancelar ou modificar a sua reserva e evitar uma penalidade, contacte-nos através de reservas.cp@almalusahotels.com. Os cancelamentos apenas são válidos mediante confirmação escrita por parte do AlmaLusa Comporta. Esta política não é aplicável a reservas não reembolsáveis ou pacotes.

Early Check-In | To guarantee early check-in, before 4pm, make sure to book the room for the previous night. Contact us for more information.

Late Check-Out | Up to 1pm – complimentary and subject to availability. After 1pm – full daily room rate, subject to availability.

Additional Guests | Children up to 18 years old must be accompanied by adults. **Rooms** are for double occupancy only. A crib for children up to 3 years old might be placed in the room, subject to availability. **Suites** can accommodate up to 3 people, with the third person sleeping on a sofa bed. For more information and availability, please contact our Reservations department at reservas.cp@almalusahotels.com.

Accessible Facilities | Our premises are designed to accommodate guests with mobility impairments. Please contact us for further information.

Dogs | We welcome dogs over 1 year of age and up to 15kg in our Garden Suites, subject to availability. A daily fee of €30 per dog will be charged at check-in, along with a refundable deposit of €100. The deposit will be returned at the end of your stay, provided no additional cleaning is necessary. Please note that specific policies apply to stays with dogs. For further information, kindly contact Reception.

Parking | Free parking is available in the village or in the car park behind the hotel. We also offer a private underground parking facility, subject to availability, for an additional fee. Please contact us for further details.

In Summary

53 rooms, including 31 suites

| Room type | (Qt.) | View | Area | Special Features |
|----------------|-------|-------------------------------|-----------------|--|
| Single Room | 1 | Comporta Village | 13sqm 139sqft | For 1 person or communicating with a Superior Room |
| Superior Room | 13 | Comporta Village or Courtyard | 17sqm 182sqft | Entry level room |
| Garden Room | 6 | Courtyard | 20sqm 215sqft | Private furnished garden with a minimum of 10sqm/107sqft |
| Terrace Room | 1 | Courtyard | 20sqm 215sqft | 12sqm/129sqft private furnished terrace |
| Superior Suite | 9 | Garden or Rice fields | 37sqm 398sqft | Open-space suite with a living area and kitchen. Can accommodate 1 adult or 2 children in a sofa bed. No private outdoor space. |
| Pool Suite | 6 | Pool | 36sqm 387sqft | Open-space suite with a living area and kitchen. Can accommodate 1 adult or 2 children in a sofa bed. 8sqm/86sqft private furnished balcony with direct access to the pool. |
| Garden Suite | 4 | Garden | 37sqm 398sqft | Open-space suite with a living area and kitchen. Can accommodate 1 adult or 2 children in a sofa bed. 40sqm/430sqft private furnished garden |
| Terrace Suite | 10 | Pool or Rice fields | 36sqm 387sqft | Open-space suite with a living area and kitchen. Can accommodate 1 adult or 2 children in a sofa bed. 30sqm/322sqft private furnished rooftop terrace, which can be accessed from outside by shared (with 1 other suite) stairs. |
| Deluxe Suite | 2 | Rice fields | 50sqm 538sqft | One-bedroom suite with living area and kitchen. Can accommodate 1 adult or 2 children in a sofa bed. Access to an 8sqm/86sqft balcony for 50€ extra/night. |



ALMALUSA
COMPORTA

Address

Rua Pedro Nunes, 3
7580-652 Comporta

Phone number

+351 265 098 600

Email address

info.cp@almalusahotels.com

www.almalusahotels.com

